

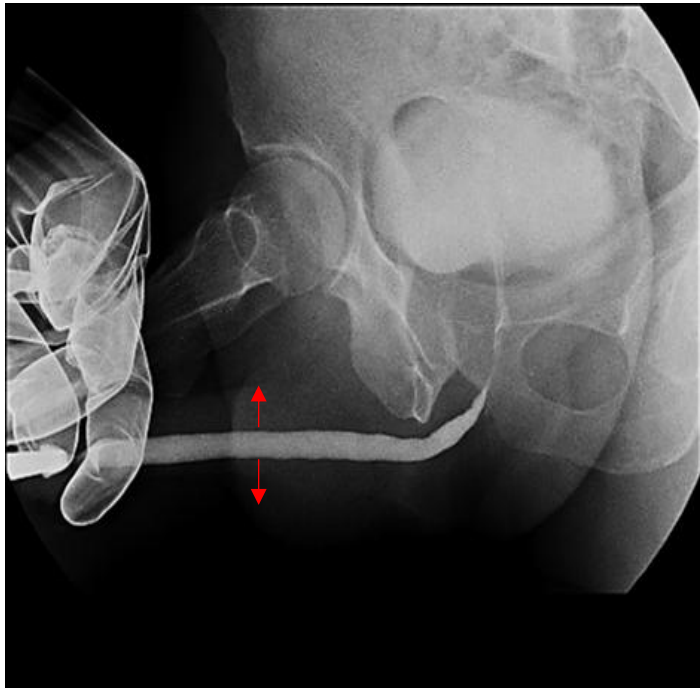


Club de la
URETRA

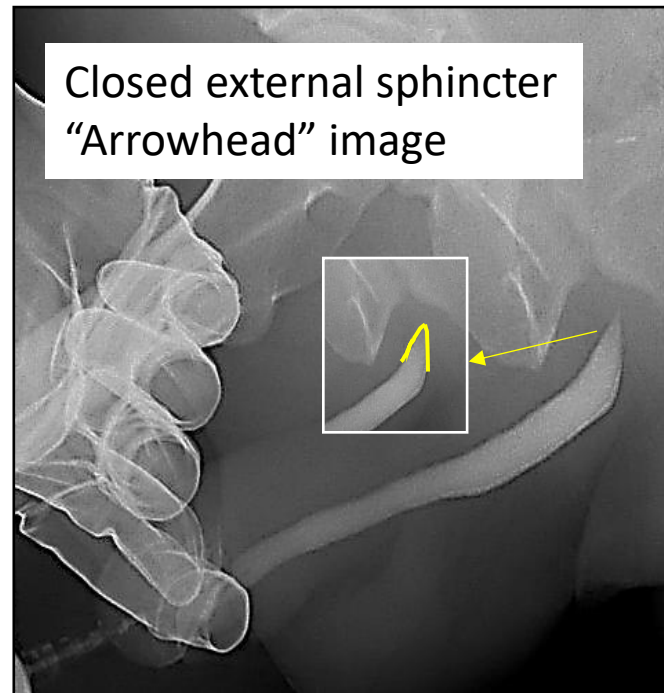
**MALE URETHROCYSTOGRAPHY:
RADIOLOGICAL
INTERPRETATION**

EVALUATION OF THE ANTERIOR URETHRA

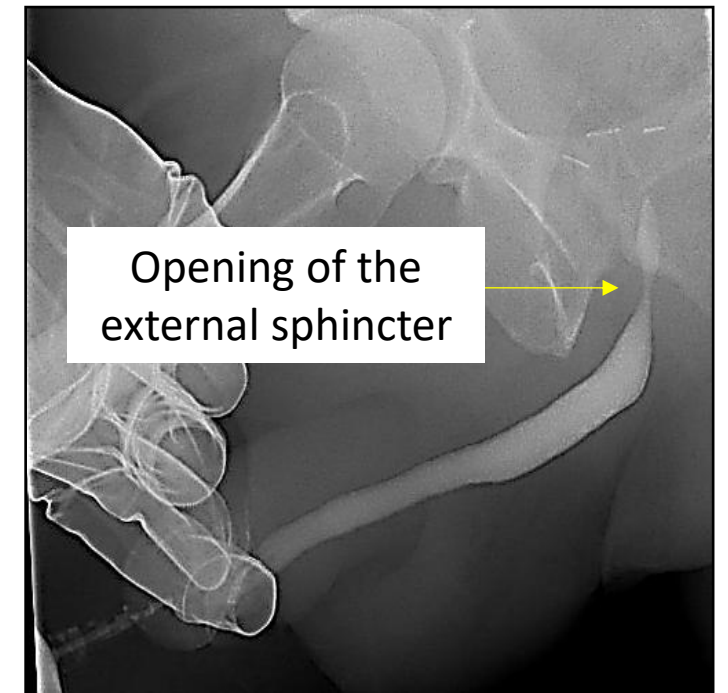
- DISTENSIBILITY URETHRAL
- EXTERNAL SPHINCTER CONTINENCE
- URETHRAL INJURY: location, length, obliterative/non obliterative



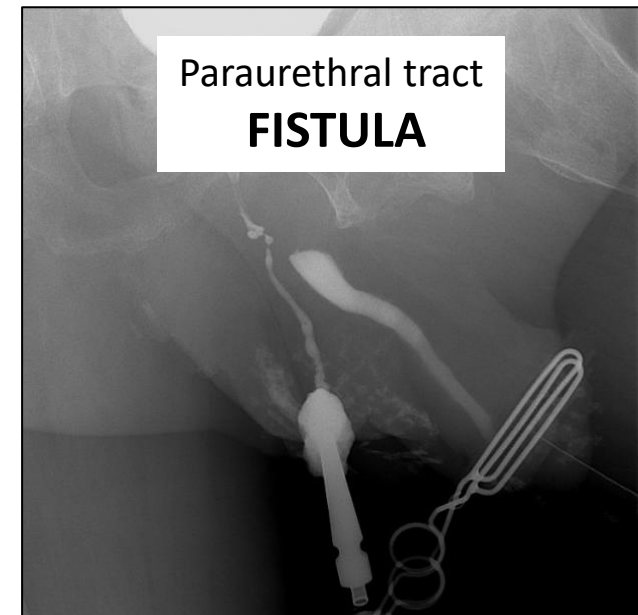
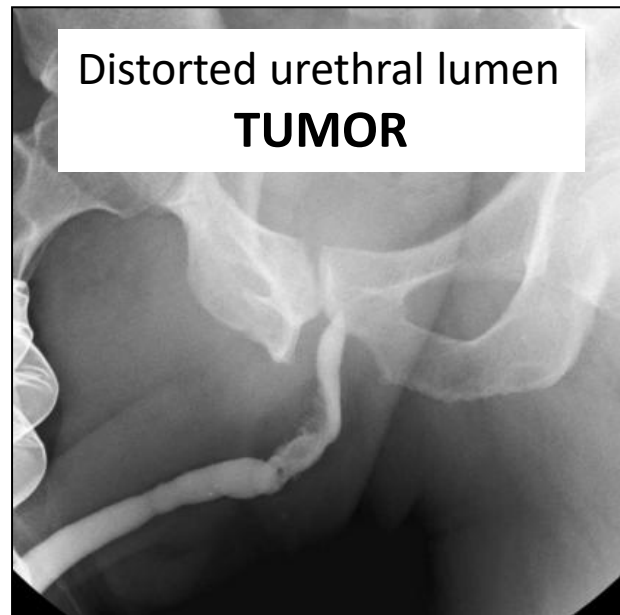
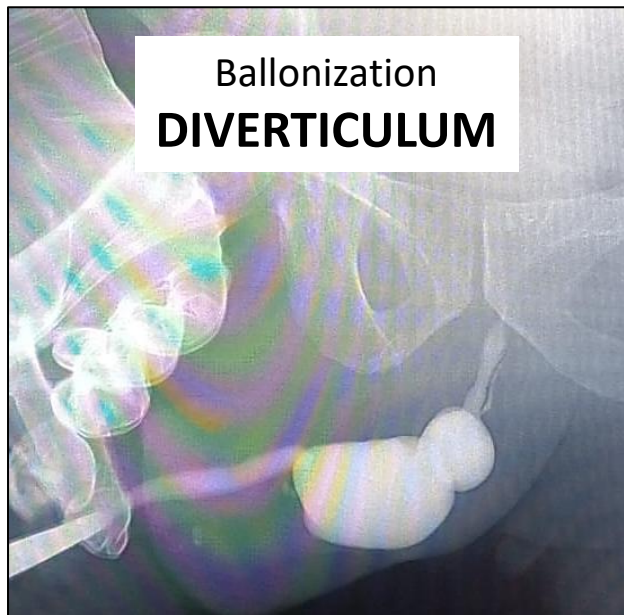
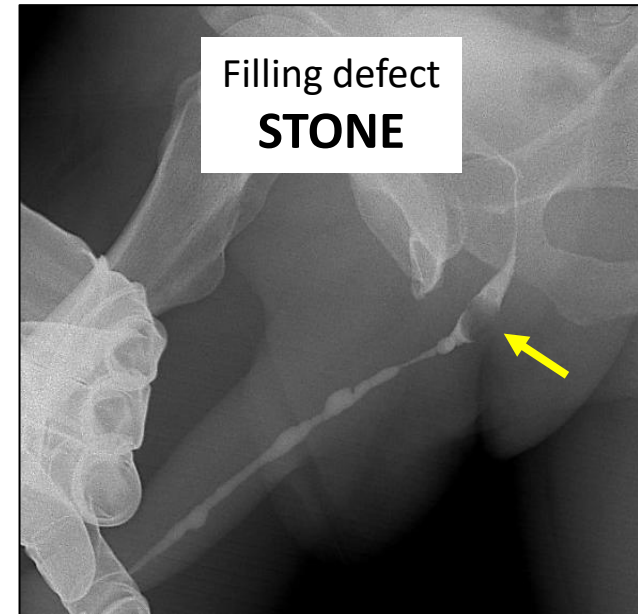
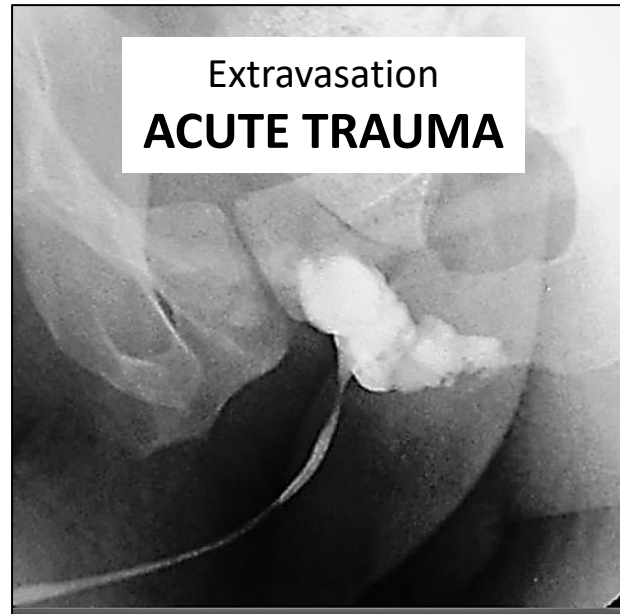
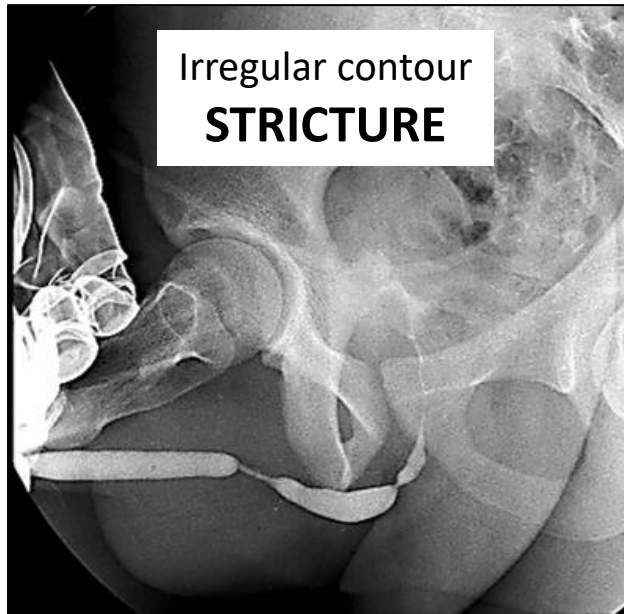
DISTENSIBILITY URETHRAL



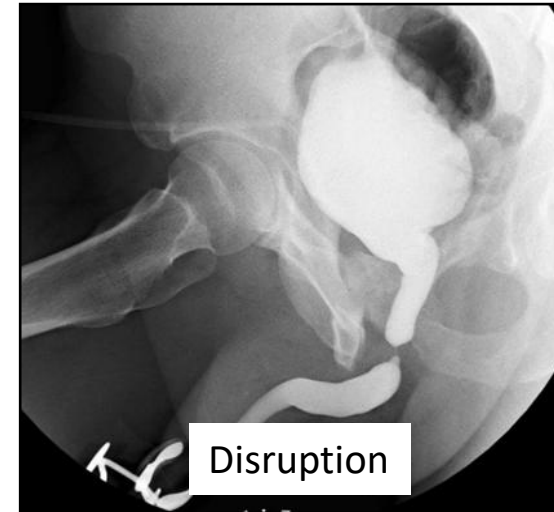
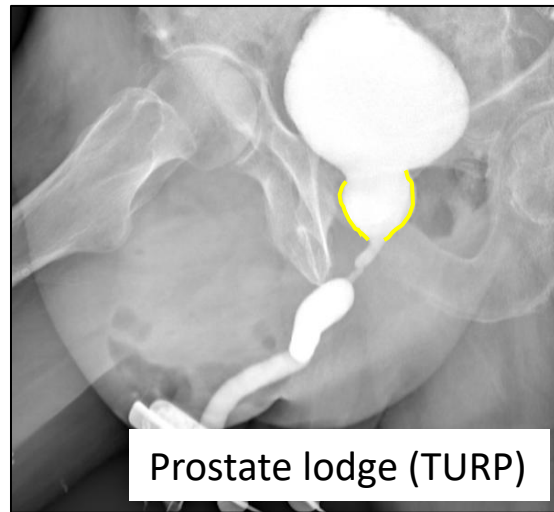
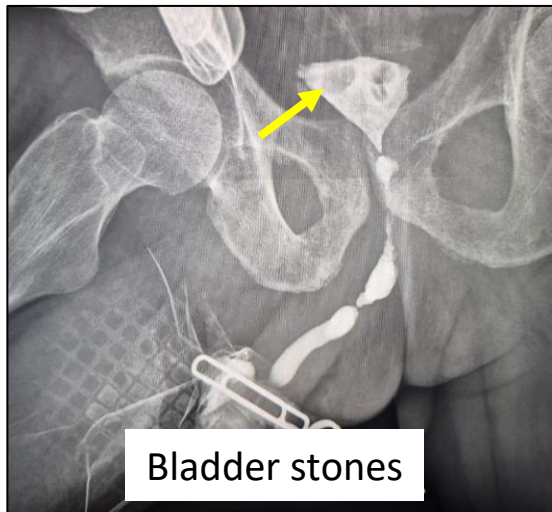
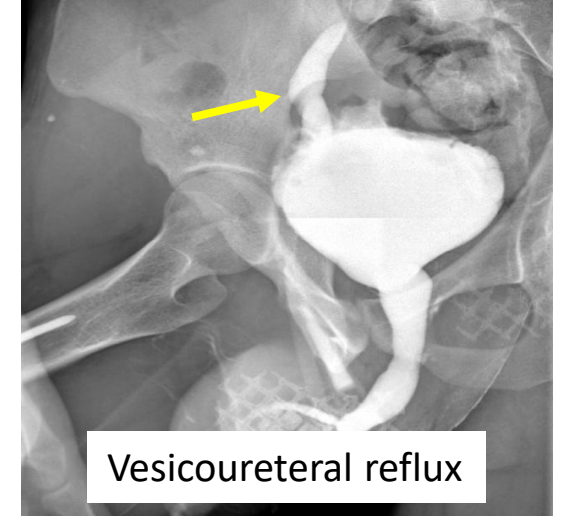
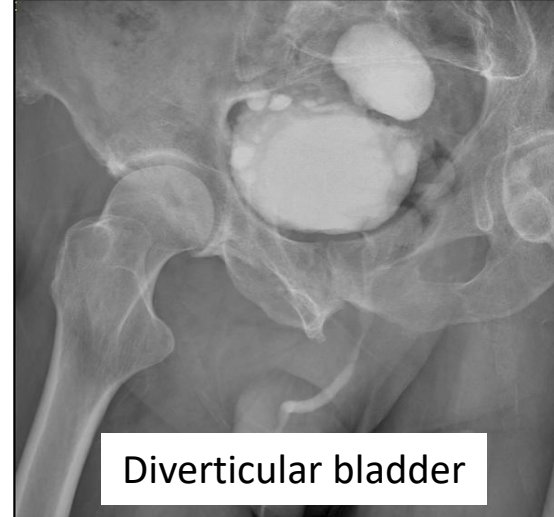
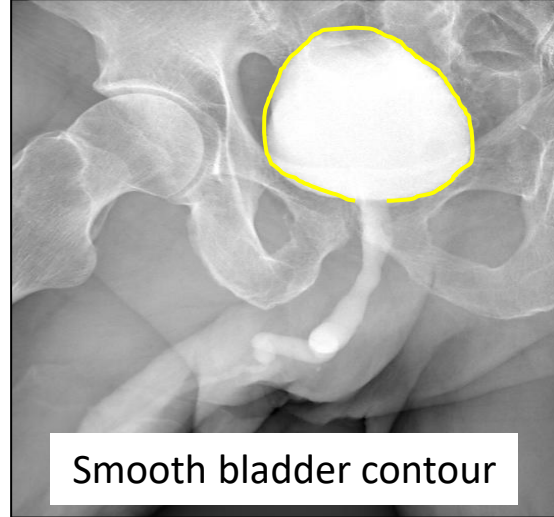
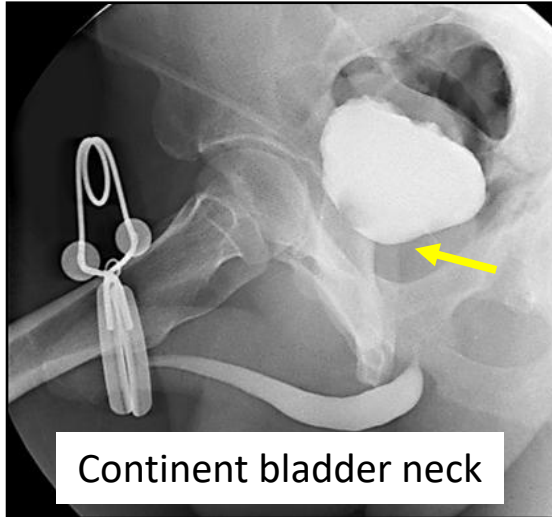
EXTERNAL SPHINCTER CONTINENCE



TYPES OF URETHRAL INJURY

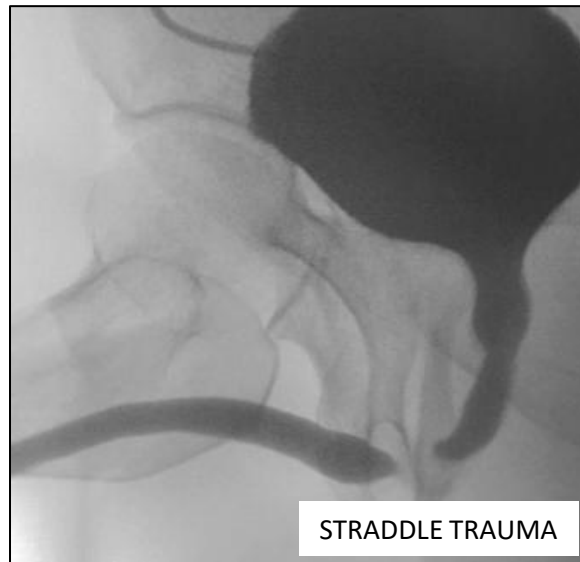
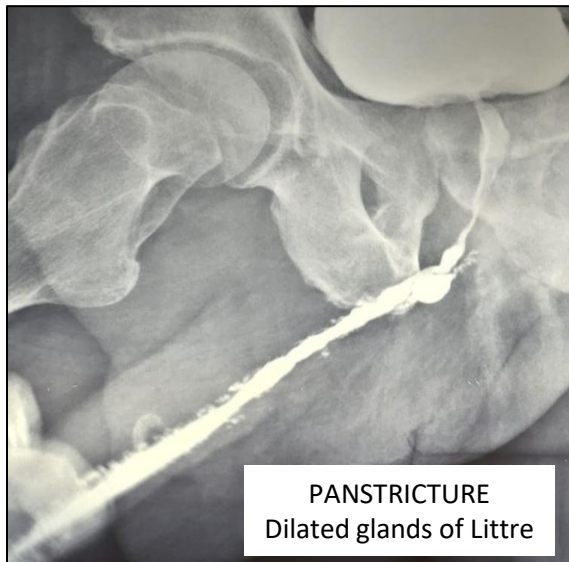
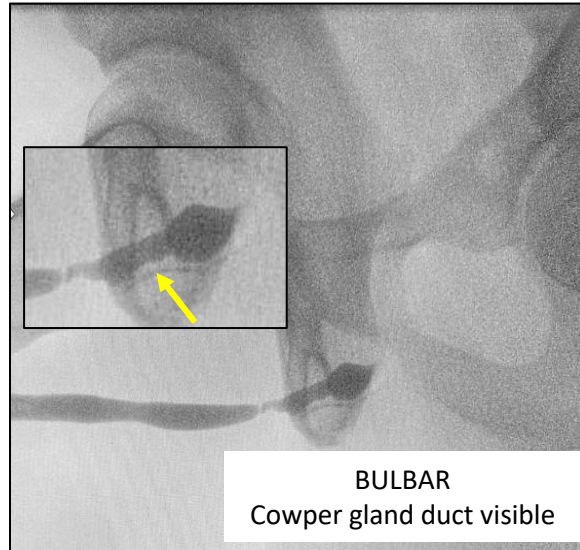
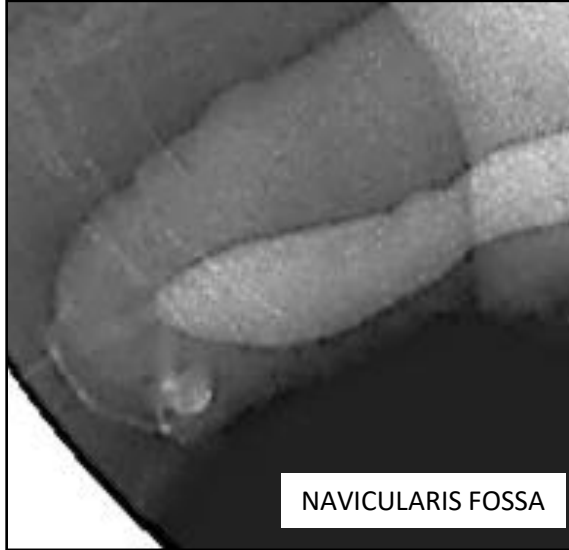


EVALUATION OF THE POSTERIOR URETHRA AND BLADDER

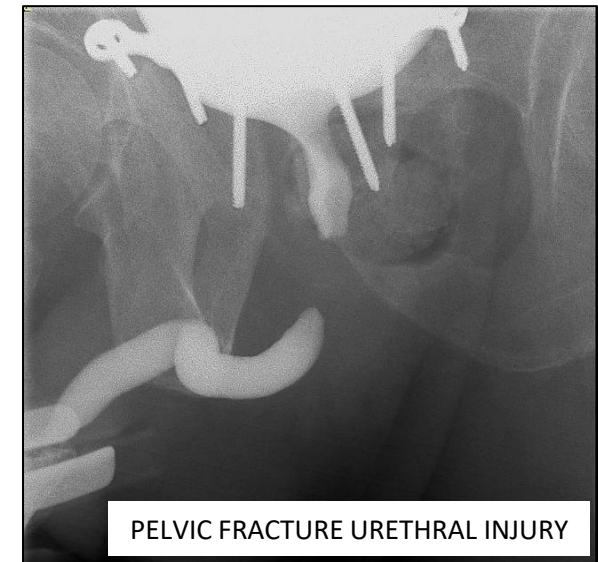
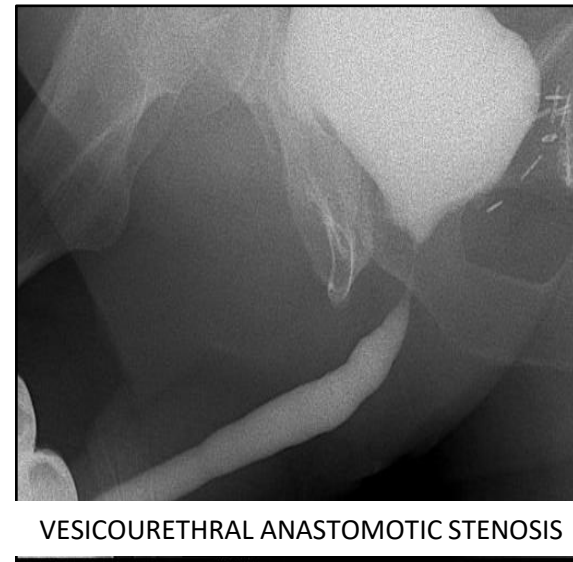
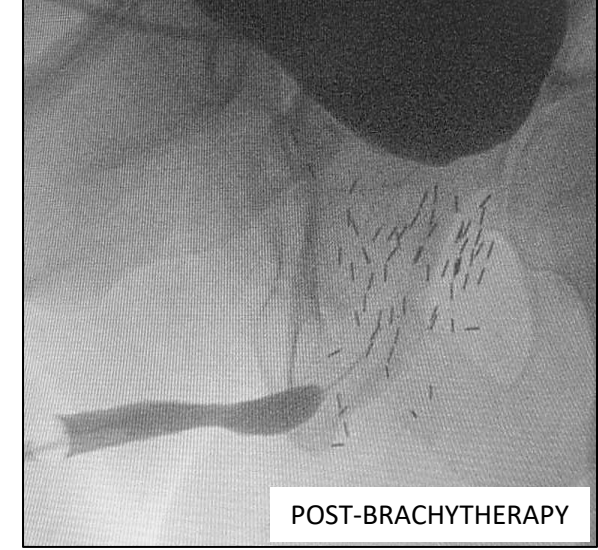
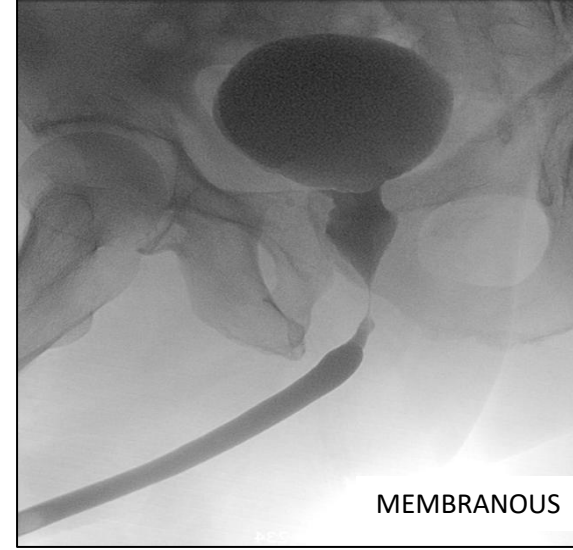


EXAMPLES OF URETHRAL STRICTURE

ANTERIOR URETHRA

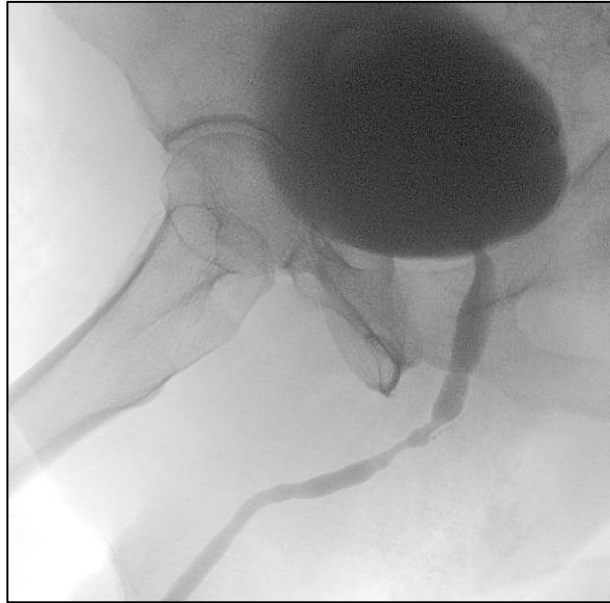
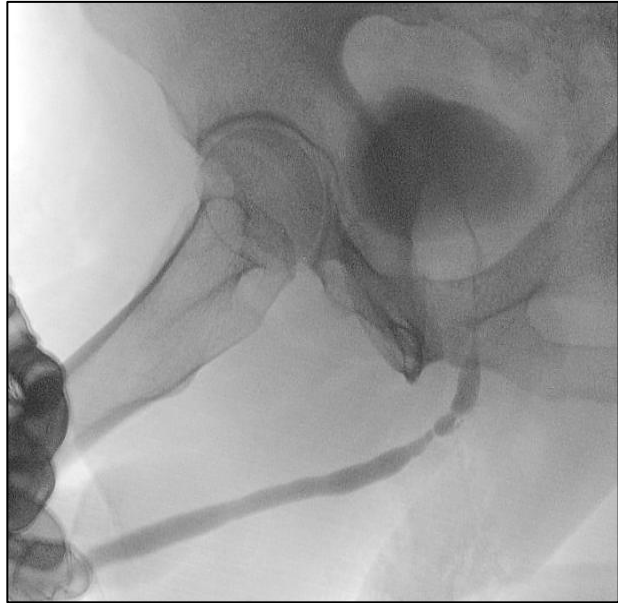


POSTERIOR URETHRA



EXAMPLE OF PATHOLOGICAL URETHROCYSTOGRAPHY

ANTERIOR URETHRA



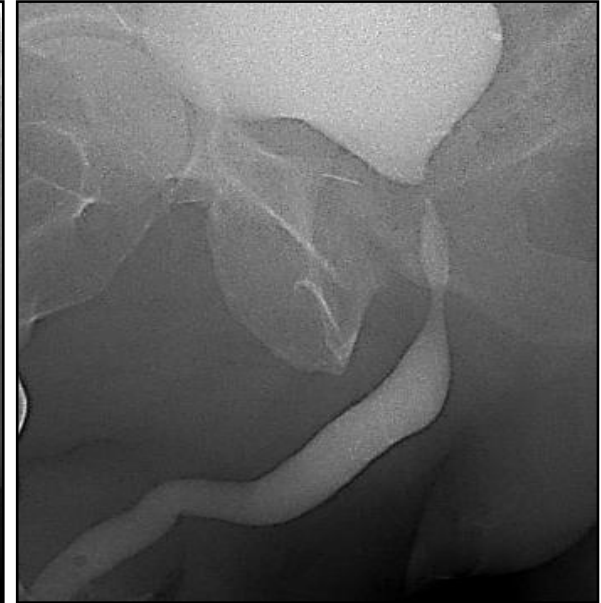
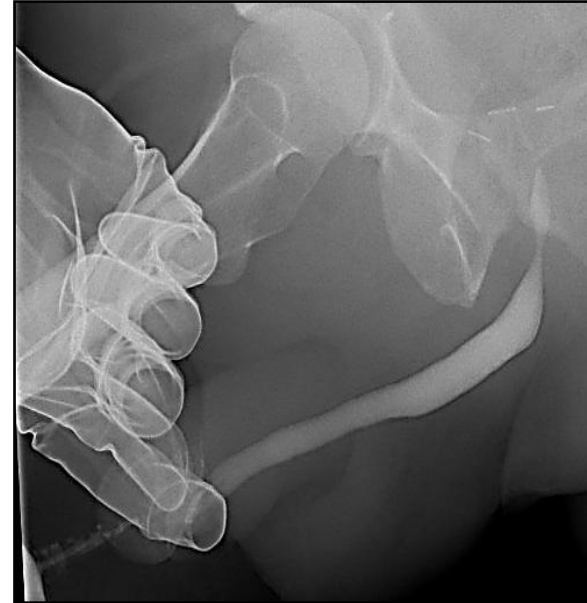
RETROGRADE PHASE

- Good urethral distensibility
- Bulbar urethral stricture, 3 cm
- Competent external sphincter
- Non-obliterative

MICTURITION PHASE

- Smooth bladder contour
- Bladder neck opening
- Posterior urethral contrast
- Bladder emptying

POSTERIOR URETHRA



RETROGRADE PHASE

- Good urethral distensibility
- Anterior urethra without lesions
- Competent external sphincter
- Obliterative
- Urethrovesical anastomosis stenosis

MICTURITION PHASE

- Smooth bladder contour
- Gap length 1 cm

REFERENCES

- **EAU Guidelines.** Edn. presented at the EAU Annual Congress Madrid 2025. ISBN 978-94-92671-29-5. <http://uroweb.org/guidelines/compilations-of-all-guidelines/>
- Wessells H, Morey A, Vanni A, Rahimi L, Souter L. **Urethral stricture disease guideline** amendment (2023). J Urol. 2023;210(1):64-71.
- Freitas PS, Alves AS, Correia PS, Dias JL. **Urethrocytography: a guide for urological surgery?** Diagn Interv Radiol. 2023 Jan 31;29(1):9-17. doi: 10.5152/dir.2022.21640.
- Velarde, L., Gómez, R (2021). **Traumatic Urethral Injuries.** A Clinical Guide to Urologic Emergencies, First Edition. Edited by Hunter Wessells, Shigeo Horie, and Reynaldo Guillermo Gómez. 2021 John Wiley & Sons Ltd. Published 2021 by John Wiley & Sons Ltd.