

Club de la
URETRA

Images from Hospital del Trabajador and SUNY Upstate Medical University archives

URETHROPLASTY INSTRUMENTATION

Retractors for urethral exposure

GURS Social Media Committee

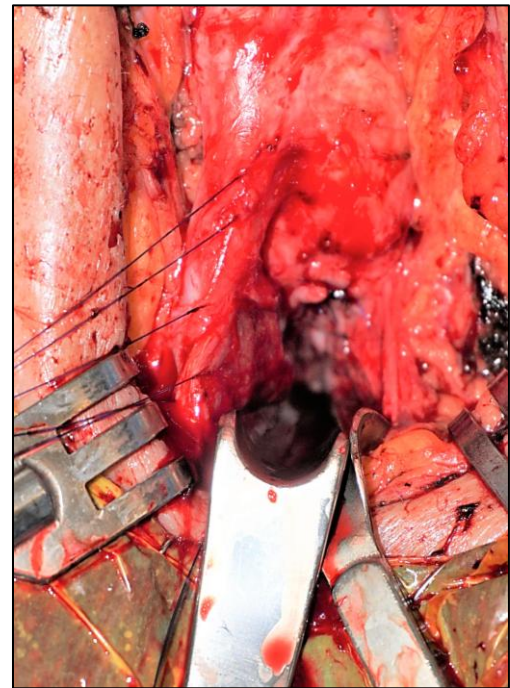


Society of Genitourinary
Reconstructive Surgeons

Dra. Laura Velarde Ramos
Dr. Dmitriy Nikolavsky

INSTRUMENTS FOR URETHRAL EXPOSURE

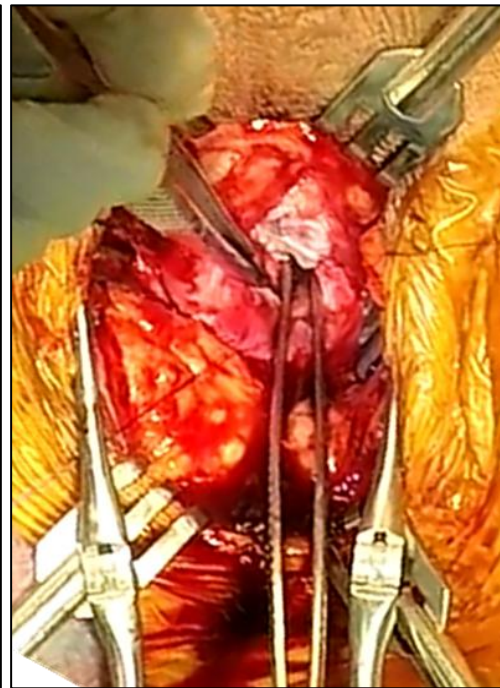
- GORGET- popularized by Prof. Mundy
- NASAL SPECULUM (14 F)- proposed by Prof. Barbagli
- DEBAKEY/ATRAUMATIC WAGONSTEIN FORCEPS- proposed by Prof. Kulkarni
- RAVINI- by Ramirez, Virasoro, Nikolavsky
- MALLEABLE RATCHETED GORGET-by Nikolavsky



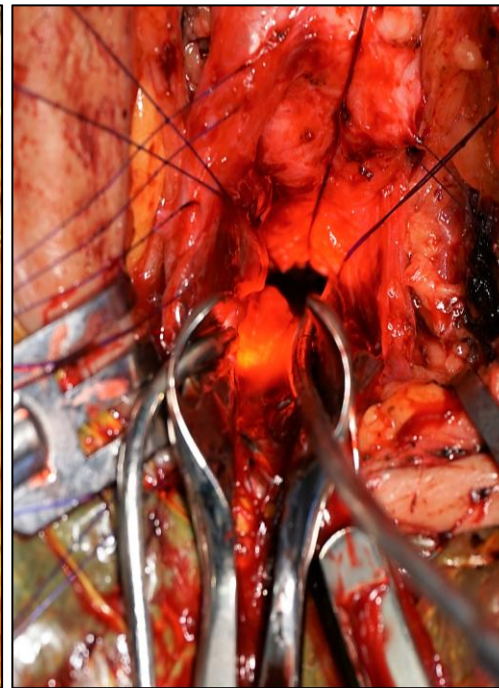
Gorget



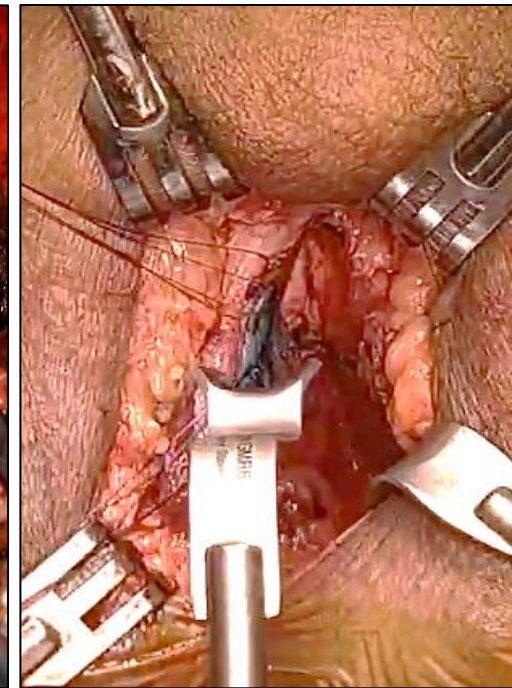
Nasal speculum



DeBakey



Ravini C



Malleable Gorget

RAVINI

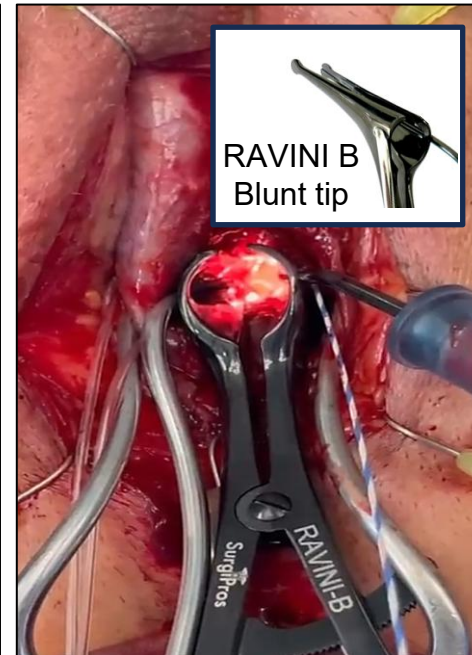
- Reusable, self-retaining
- Handle with a ratchet locking mechanism
- Provides a symmetric tissue retraction
- Versions: RAVINI: 14 French
 - RAVINI B: Blunt tip, suction
 - RAVINI C: 12 French, Council-tip
- Connects to the light source, +/- suction
- Facilitates the exposure of the proximal end for urethral exposure (dissection, suture placement)

Creators

Erick **RA**mírez, MD

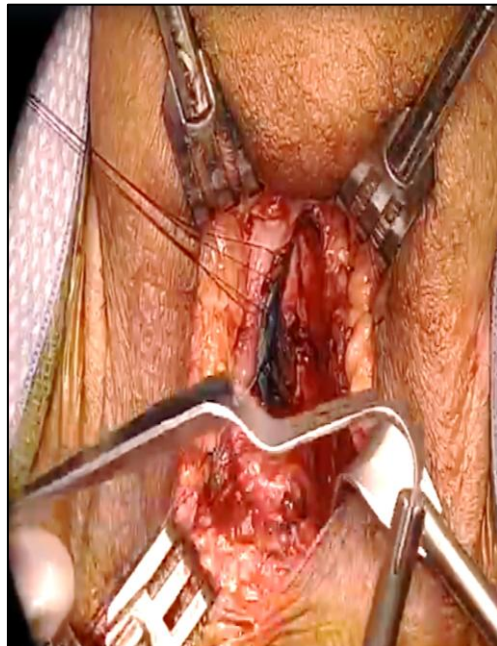
Ramón **VI**rasoro, MD

Dmitriy **NI**kolavsky, MD



TEALES GORGET

- Reusable, hand-held
- Conical shape
- Blunt tip
- Versions: rigid, malleable
- Facilitates the exposure of the proximal end for placing the sutures of the urethral anastomosis



RIGID

	Widest segment	Narrowest segment
Small	11 mm	4.5 mm
Large	17 mm	7 mm