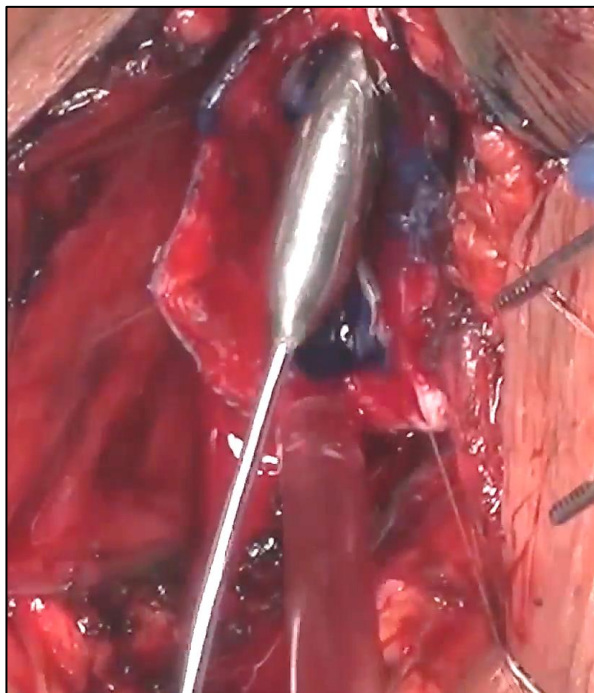
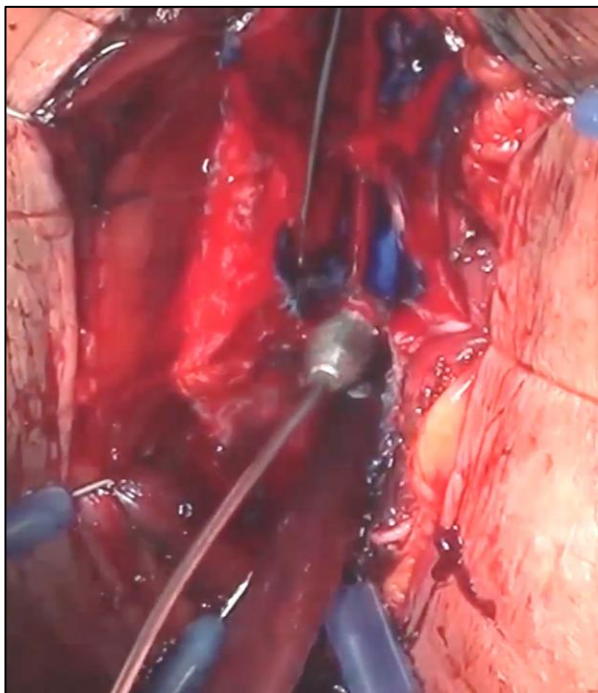


Club de la
URETRA

URETHROPLASTY INSTRUMENTATION

Urethral calibrators

- **WHEN IS IT USED?** Calibration of the proximal and distal ends
- **WHAT IS THE ACCEPTABLE DIAMETER?** It will depend on the urethral segment
In general, 16 French is acceptable in all segments
- **WHEN DO I KNOW I AM IN HEALTHY URETHRA?** When the calibrator passes without resistance
Dilation should not be performed

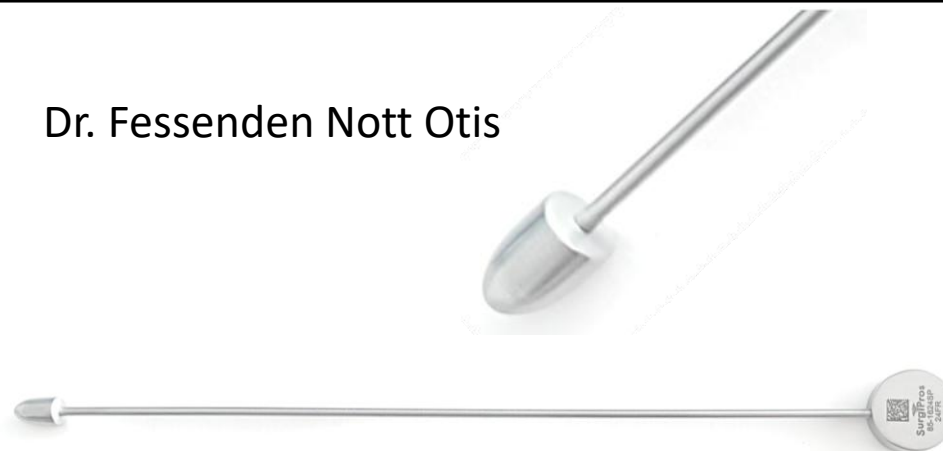


MALLEABLE urethral calibrators

OTIS BOUGIE

- Designed for urethral surgery
- Atraumatic, bulbous tip
- Malleable shaft
- Standard set: 12 bougies
- Handle markings: 8–10–12... up to 30 French

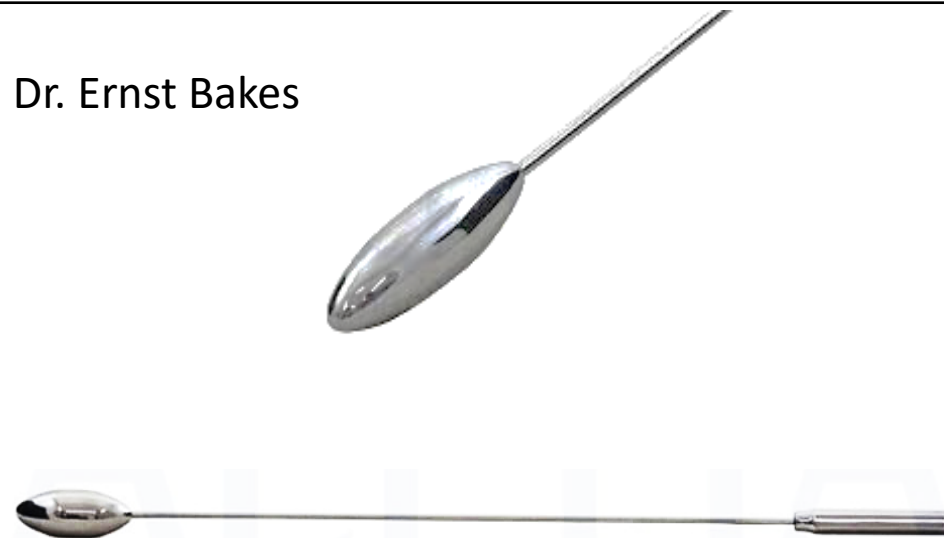
Dr. Fessenden Nott Otis



BAKES

- Designed for biliary surgery, also useful in urethral surgery
- Atraumatic, olive-shaped tip
- Malleable shaft
- Standard set: 13 Bakes dilators
- Handle markings: No. 1 to 13
- Diameter calculation: Bakes number \times 3
e.g., Bakes 6 \times 3 = 18 French
- Commonly used sizes: No. 3 to 10

Dr. Ernst Bakes



RIGID urethral calibrators

BENIQUÉ

- Designed for urethral dilation/calibration
- Shape: gentle curvature in the distal third
- Atraumatic, conical tip
- Diameter: progressive within each dilator
- Standard set: 13
- Handle markings: 6–8–10...up to 30 French

Dr. Pierre Jules de Benique





VAN BUREN

- Designed for urethral dilation/calibration
- Shape: “J”-shaped curvature in the distal third
- Atraumatic, rounded tip
- Diameter: fixed for each dilator
- Standard set: 12
- Handle markings: 8–10–12...up to 30 French

Dr. William Holme Van Buren



Advantages/disadvantages of its use in urethroplasty

	MALLEABLE	RIGID
		
ADVANTAGES	<ul style="list-style-type: none"> • Simple and easy-to-use instrument • Precise calibration • Malleability: urethral insertion without traction 	<ul style="list-style-type: none"> • Simple and easy-to-use instrument • Gentle and minimally traumatic dilation
DISADVANTAGES	<ul style="list-style-type: none"> • Training required for use • Improper use: risk of bleeding and/or a false passage 	<ul style="list-style-type: none"> • Training required for use • Operator dependent • Requires urethral traction and adapting the instrument to the urethral anatomy • Improper use: risk of bleeding and/or false passage