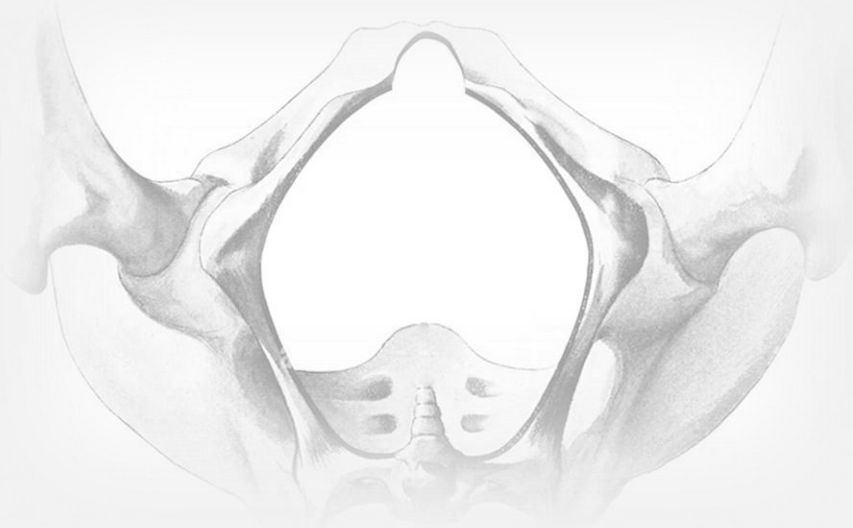
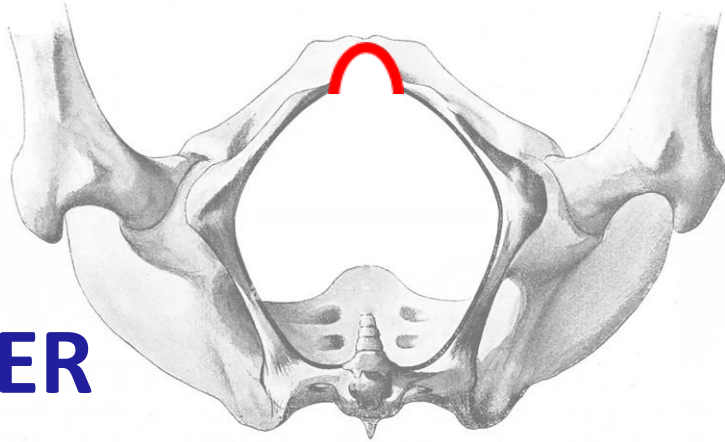


Club de la
URETRA

URETHROPLASTY INSTRUMENTATION

Pubectomy





LOWER



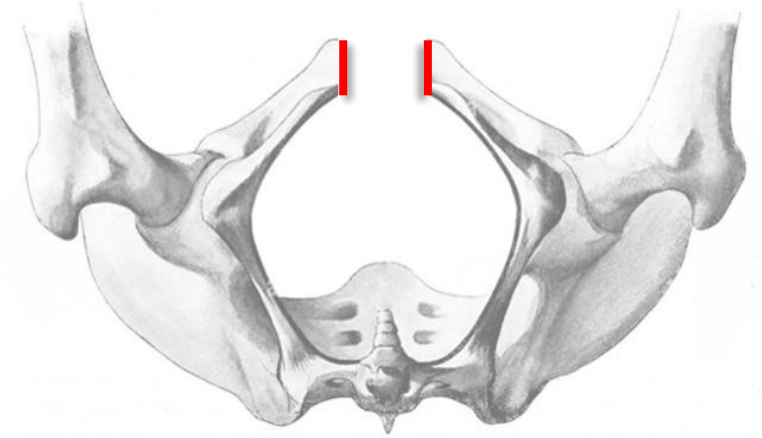
Hammer



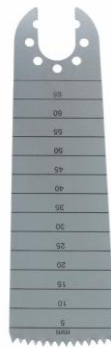
Gouge



chisels and
periosteal elevator



UPPER



Motor + saw



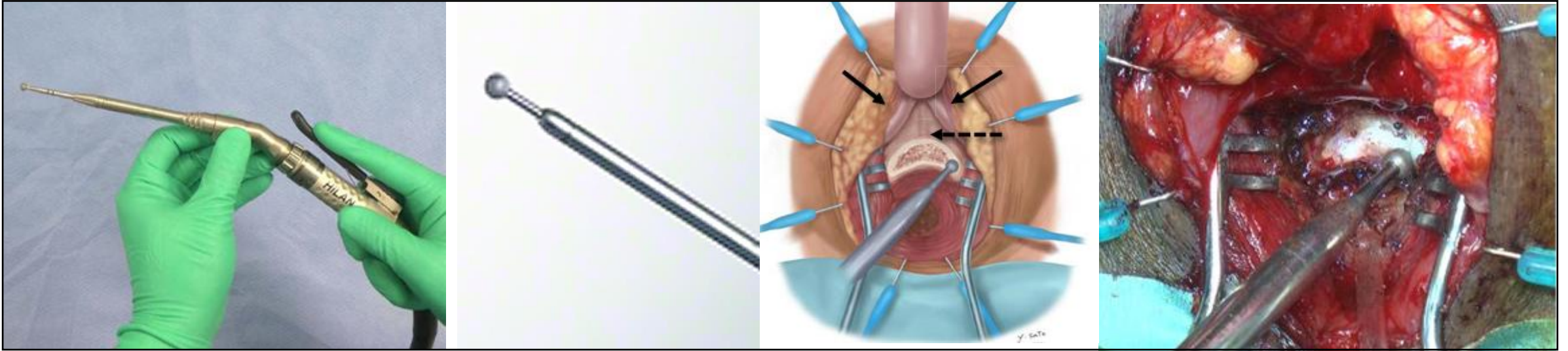
Hammer



Gouge



chisels and
periosteal elevator



Horiguchi, 2020

Motor + surgical burs

- Burns of different sizes
- Pneumatic system
- Precise reshaping and contouring of the pubis according to the required pubectomy design
- Use for lower and upper pubectomy

REFERENCES

- Middleton RG, Sutphin MD (1985). **Pubectomy in urological surgery.** J Urol;133(4):635-7. doi: 10.1016/s0022-5347(17)49122-1.
- Webster GD, Ramon J (1991). **Repair of pelvic fracture posterior urethral defects using an elaborated perineal approach: experience with 74 cases.** J Urol;145:744-8
- Koraitim MM (2010). **Transpubic urethroplasty revisited: total, superior, or inferior pubectomy?** Urology;75(03):691–694
- Gómez RG, Scarberry K (2018). **Anatomy and techniques in posterior urethroplasty.** Transl Androl Urol. 2018 Aug;7(4):567-579. doi: 10.21037/tau.2018.03.05.
- Neuville P, Hagedorn JC, Skokan AJ, Morel-Journel N, Wessells H (2024). **Management of long-term functional sequelae of pelvic fracture urethral injury.** Fr J Urol;34(10):102711. doi: 10.1016/j.fjurol.2024.102711.
- Horiguchi A, Ojima K, Shinchu M, Hirano Y, Hamamoto K, Ito K, Asano T, Azuma R (2020). **Usefulness of a high-speed surgical air drill in pubectomy during delayed anastomotic urethroplasty for pelvic fracture urethral injury.** Int J Urol;27(11):1002-1007. doi: 10.1111/iju.14344.